



February 2021

Object: Status of the zebra mussel invasion

This document is intended to clarify the situation of the implantation of the zebra mussel on the Massawippi Lake and explain how we were able to obtain the data that are used in the map attach.

Between October 15th and December 17th, all eyes were on the lake Massawippi. An emergency response plan was initiated and exploratory dives at more than 60 sites on the lake were organized. Blue Massawippi has taken control of the diving operation to start extracting zebra mussels from the lake. We focused mainly on the north part of the lake where the source of the infestation is located. As you can see on the map attach to this document, the concentration of mussel is clearly located on both sides of the Federal wharf. If we let go of our diving effort, these sites will be the first affected by the exponential growth of the mussel population.

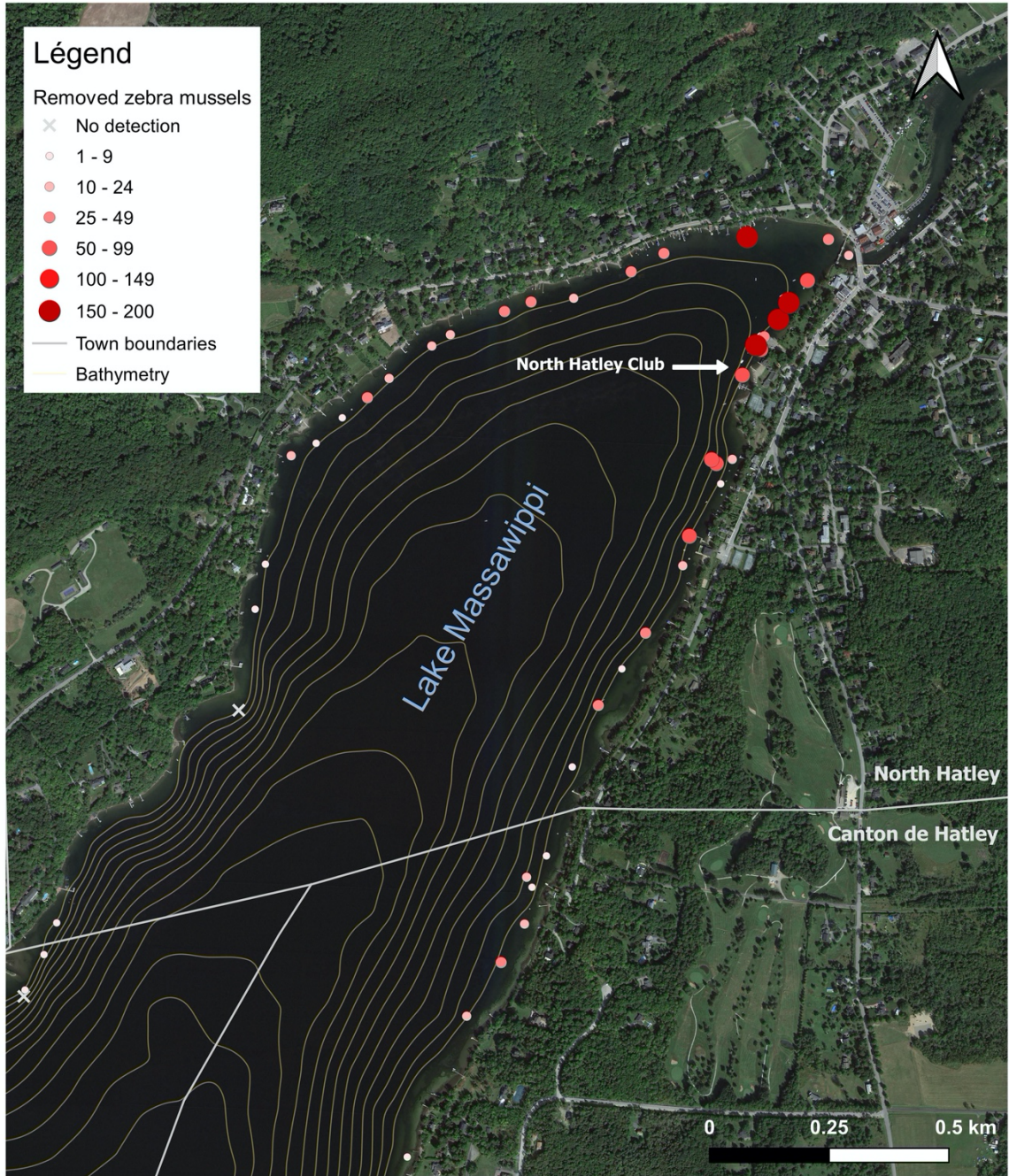
Current dives in Lake Massawippi confirm the presence of **a small population of juveniles**, distributed over a large part of the northern sector. Certain lakes have succeeded in eradicating the zebra mussel with a long-term diving intervention, a great example being Lake George in the state of New York. The teams that worked on this project say that the early detection of mussels was the main reason for their success. As a result of our continued efforts, we are also detecting the mussels very early and think that we have to do everything that is possible to stop the invasion as the Lake George team did. To do so, everyone needs to be mobilized.

We have two options for Lake Massawippi; either act now or suffer the consequences of a permanent establishment of the zebra mussel. Blue Massawippi firmly believes that our only reliable option is diving. If this intervention does not succeed in eradicating the zebra mussel, it will at least be beneficial by delaying mussel proliferation, which will allow us to continue the fight into the next season, delay the costs associated with the maintenance of public infrastructure (water intake) and delay the effects on tourism and biodiversity for at least a few years, if not a decade.

We are ready to put up a professional diving operation for this spring and this summer with the help of many important partners. All the municipalities around the lake voted a resolution to support our plan financially and politically. Of course, the Massawippi Foundation through anonymous members have been a huge support to raise money. Now, we hope that we can count on your support. Feel free to contact me for information, I'll be glad to answer any of your questions.

Philippe-David Blanchette
Directeur général adjoint
dg@bleumassawippi.com

Zebra mussel control : Fall 2021 underwater dives summary (North Hatley area)



Projection: WGS 84

Vincent Lemieux, december 2021